

# NISS/SAMSI Affiliate Update

May 2012

## Nominations Sought for Jerome Sacks Award for Outstanding Cross-Disciplinary Research

Nominations are sought for the 2012 National Institute of Statistical Sciences' (NISS) **Jerome Sacks Award for Outstanding Cross-Disciplinary Research**. The prize recognizes sustained, high-quality cross-disciplinary research involving the statistical sciences. The prize of \$1,000 will be presented at the NISS/SAMSI JSM Reception on July 29, 2012, in San Diego. Further information about the award can be found at the [NISS website](#).

## NISS Events

### Reminder: NISS/SAMSI Annual Affiliates Meeting

**When:** May 14-15, 2012

**Where:** Bureau of Labor Statistics, Washington DC

In less than two weeks, the NISS/SAMSI Affiliates will meet to discuss ideas proposed by the Affiliates Committee of the NISS Board of Trustees for reshaping the Affiliates Program. The agenda includes working sessions on Monday that emphasize sector-specific perspectives, together with working sessions to recommend priorities and mechanisms for implementing the first of the new activities and opportunities. NISS and SAMSI's goals are to ensure that the program continues to deliver high value to the Affiliates, as well as engage Affiliates more deeply in the operation of the program.

Tuesday morning will focus on the 2012-13 SAMSI programs on Data-Driven Decisions in Healthcare and Statistical and Computational Methodology for Massive Datasets. Program leaders from both programs will present background material and outline challenges for research to be undertaken during the program. Remember that this research can include remote Working Group collaborators!

## Co-Sponsored Events

### Southern Regional Council on Statistics Summer Research Conference

**When:** June 3-6, 2012

**Where:** Jekyll Island, GA  
ARA ELIGIBLE.

[Details here.](#)

### 4<sup>th</sup> International Conference on Establishment Surveys (ICES IV)

**When:** June 11-14, 2012

**Where:** Montreal, Canada

[Details here.](#)

## Featured Affiliate - University of Missouri - Department of Statistics

Statisticians are in demand in education, medicine, government, business and industry as well as in the biological, social and physical sciences. The Department of Statistics at the University of Missouri has prided itself training students to meet this need since its creation in 1963.

The faculty at this department are known for both cutting edge methodological and collaborative research and for outstanding teaching. Faculty members are currently investigating statistical problems in the fields of ecology, genetics, economics, meteorology, wildlife management, epidemiology, AIDS research, geophysics, and climatology. We maintain strong ties with other departments and research groups, especially economics, psychology, atmospheric science and the Missouri Department of Conservation. For more information, [click here](#).

## Useful Links

[NISS Website](#)

[SAMSI Website](#)

## 8th International Purdue Symposium on Statistics "Diversity in the Statistical Sciences for the 21st Century"

**Where:** Purdue University, West Lafayette, IN

**When:** June 20-24, 2012

ARA ELIGIBLE.

[Details here.](#)

## SAMSI Events

### Interdisciplinary Workshop for Undergraduates and Faculty

**When:** May 14-18, 2012

**Where:** SAMSI, Research Triangle Park, NC

This week long workshop will provide an introduction to the field of uncertainty quantification (UQ) for students and faculty from the mathematical and statistical sciences. The overall goal of the



workshop is to illustrate the need for and power of quantitative methods to confront important data- and model-driven scientific challenges. A limited number of faculty will be invited to attend a parallel workshop.

While some lectures and the panels will be attended together with the students, most of the faculty activities will be conducted independently. [Details here.](#)

### Uncertainty Quantification Transition Workshop

**When:** May 20-24, 2012

**Where:** Radisson Hotel, Research Triangle Park, NC

This workshop is the formal end of the 2011-12 program on Uncertainty Quantification, but not the end of the collaborations and research that it has catalyzed. Presenters will review and discuss progress made so far in the various projects of the program, and discuss their significance and synergies. Future directions of research in the program areas will be assessed. The workshop will feature sessions from all active working groups and will bring together participants across the various areas of the program. [Details here.](#)

## SAMSI's 2012-13 Programs

### Program on Data-Driven Decisions in Healthcare

**Opening Workshop:** August 26-29, 2012

**Where:** Radisson Hotel, Research Triangle Park, NC

This program will address issues of mathematical and statistical theory and methodology that will improve evidence-based healthcare decision-making. The goals are to:

- Strengthen the link between data and decisions, a path that includes major challenges in mathematical modeling and statistical inference.
- Highlight and increase the role that statistics, applied mathematics and operations research can play in making data-driven healthcare decisions.

The program will have two principal—and intersecting—themes: Operations Research Modeling and Comparative Effectiveness Research. To learn more, [click here.](#)

### Program on Statistical and Computational Methodology for Massive Datasets

**Opening Workshop:** September 9-12, 2012

**Where:** Radisson Hotel, Research Triangle Park, NC

This program focuses on fundamental methodological questions of statistics, mathematics and computer science posed by massive datasets, with applications to astronomy, high energy

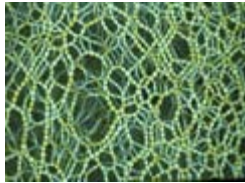
physics, and the environment. Serious challenges posed by massive datasets have to do with "scalability" and "data streaming." Techniques developed for small or moderate-sized datasets simply do not translate to modern massive data sets. Data acquisition rates on the order of gigabytes per second necessitate innovative approaches towards computing environments, analysis and algorithms. For more information, [click here](#).

## SAMSI's Summer Programs for 2012-13

### Summer Program on Nonlocal Continuum Models for Diffusion, Mechanics and Other Applications

**When:** June 25 - 29, 2012

**Where:** SAMSI, Research Triangle Park, NC



Participants in the workshop will discuss modeling, mathematical, statistical, computational, and applications issues such as kernel choices, connections between nonlocal continuum models and discrete models, well posedness of the equations, finite element and other discretization

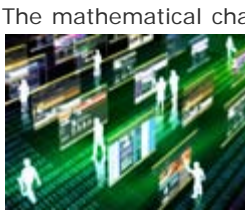
methods, efficient solution methods for discretized systems, uncertainty quantification and applications including mechanics, image processing, graphs, diffusion and wave propagation.

[Details here.](#)

### Summer Program on Computational Advertising

**When:** August 6 - 17, 2012

**Where:** SAMSI, Research Triangle Park, NC



The mathematical challenges that arise in computational advertising include massive, high-speed linear programming, better agent-based models for auction dynamics, and the computational finance behind dynamic management of the sales portfolio. The statistical challenges include modeling and forecasting of trends among users,

prediction methodology for recommender systems, and modeling the revenue streams. [Details here.](#)

#### NISS and SAMSI

P.O. Box 14006, Research Triangle Park, NC  
[www.niss.org](http://www.niss.org) and [www.samsi.info](http://www.samsi.info)



This email was sent to [kak@niss.org](mailto:kak@niss.org) by NISS  
19 T.W. Alexander Dr. | PO Box 14006 | RTP | NC | 27709  
[Forward to a friend](#) | [Manage Preferences](#) | [Unsubscribe](#)