

THE KATRINA INDEX

JANUARY 17, 2007

TRACKING RECOVERY OF NEW ORLEANS & THE METRO AREA

“New Orleans continues to struggle with the pains of rebuilding, made that much more difficult by the increasing threat of violent crime. Still, trends indicate the pace has picked up in some areas of the recovery. Further progress will require clear improvements in the criminal justice system, along with investments in the city’s vital infrastructure.”

Allison Plyer

Greater New Orleans
Community Data Center

The Brookings Institution

Metropolitan Policy Program



Lessons from the Katrina Index for Tracking Post-Disaster Recovery

November 28, 2006



Katrina Index: What Is It?

- Monitors the social and economic recovery of the city and region of New Orleans
- Relies on 38 indicators
- Uses parish-level data where possible
- Has been released *monthly* since December 2005 (with weekly, monthly or quarterly trend updates)



Katrina Index: Why Did We Start It?

- To keep regular public and political attention on the recovery effort
- To better understand the areas of greatest need in the short- and long-term recovery
- To leverage our position as trend analysts and urban policy experts; serve as go-to-resource for the post-disaster recovery response



Katrina Index: How Did We Start It?

- Conceived in September/October 2005; mirrored after the successful Iraq Index at Brookings
- Launched in December 2005
- Created list of indicators we wanted
- Spent two months identifying sources: finding reliable contact at sources was difficult in some places; local data sources harder
- Started with approximately 20 indicators and expanded over time (now 38)



Katrina Index: Sample Indicators and Sources

Housing

*Services and
Infrastructure*

*Workforce and
Economy*

*Emergency
Response*



Katrina Index: Demand Is High

- Over 370 media citations since August 2005
- Over 47,000 visits to the Katrina Index website between December 2005 and November 2006
- The Katrina listserv is made up of a total of 1,400 members from the business, educational, government (federal, state & local) and non-profit fields



Katrina Index: Inquiries Come from all Quarters

- Media (international, national, local) – print, editorials, TV, radio
- Local, state and federal policymakers (e.g., Hill, Powell's office, GAO, LRA, NOLA agencies)
- Other non profits and interest groups (housing advocates, environmental, etc.)
- Private companies (e.g., McKinsey, ICF International, Entergy, law firms, planning and design firms, consulting groups)
- Scholars/ Researchers/Students



Katrina Index: Has Helped Set the Policy Agenda

- Helped establish where the outstanding needs are and thus policy priorities (affordable housing, geographic unevenness in recovery, infrastructure)
- Confirmed what was widely known but only anecdotally
- Framed media discussions



Challenges and Limitations of the Katrina Index

- A lack of organized, publicly accessible data at the metro- and lower levels of geography
 - e.g., hotel and restaurant openings, status of libraries, schools, and public transportation services
- The lag, irregularity, and termination of data reporting, e.g.:
 - A number of local agencies do not have a set reporting schedule;
 - Local economic data from BLS typically released at least one month later;
 - BLS no longer reporting employment situation for hurricane evacuees after October 2006
- Very time intensive given lack of standardization (or high level of customization), particularly given the high reliance on local data



Challenges and Limitations of the Katrina Index - Does not include quality data that is in high demand

1. Current population size
2. Demographic characteristics of returning population
3. Federal spending
4. Number and well-being of evacuees



Overall Lessons from Katrina Index

- Overall, there is enormous value and demand for data and analysis
- There is enormous demand for a “one-stop shop” of data so that reporters, researchers, and decisionmakers don’t have to go retail/hunting
- Local data is the most difficult to get, but sometimes the most relevant or up-to-date
- Federal data: lag in reporting, point of contacts (esp. in FEMA) changed often which created occasional errors



Overall Lessons from Katrina Index

- Wish list:
 - better partnership with local reporting agencies
 - better federal data, esp. of federal beneficiaries
 - better current population and demographic estimates



Analysis



Jan 06 “The number of open bus routes and the amount of airport traffic in the area increased, but most of the key indicators moved in the wrong direction or not at all. The bottom line: it continues to be a very risky decision for many of the displaced households to return to the area, since all of the key necessities are in scarce supply, With New Orleans still facing massive economic and infrastructural challenges, it is likely that many of the displaced households will need federal assistance for many months to come.”



Jan 06 “The number of open bus routes and the amount of airport traffic in the area increased, but most of the key indicators moved in the wrong direction or not at all. The bottom line: it continues to be a very risky decision for many of the displaced households to return to the area, since all of the key necessities are in scarce supply, With New Orleans still facing massive economic and infrastructural challenges, it is likely that many of the displaced households will need federal assistance for many months to come.”



July 06 "On June 15, the president signed an emergency supplemental bill that included \$19.8 billion in CDBG funding for families and communities in the Gulf Coast. Meanwhile, this month's index finds continued churning in the overall housing market, while all other aspects of recovery remain at a virtual holding pattern. The rise in home sales, permits, and demolitions seems to have been accelerated by the April release of the FEMA housing elevation maps.”



Jan 07 “The city continues to struggle with the pains of rebuilding, made that much more difficult by the increased threat of violent crime. Still, progress continues, and has even picked-up pace in some areas of the recovery. Further progress in 2007 will require a strong and sustained response to the crime trend, and clear evidence of improvements in the criminal justice system, along with investments in the city’s vital infrastructure.”



Jan 07 “The city continues to struggle with the pains of rebuilding, made that much more difficult by the increased threat of violent crime. Still, progress continues, and has even picked-up pace in some areas of the recovery. Further progress in 2007 will require a strong and sustained response to the crime trend, and clear evidence of improvements in the criminal justice system, along with investments in the city’s vital infrastructure.”



Mar 07 "Eighteen months after Hurricane Katrina, housing indicators are mixed, and economic indicators may be showing the first signs of increasing employment, but infrastructure indicators remain basically stalled. With hurricane season less than three months away, officials must take quick action to eliminate excessive red tape to ensure the flow of stalled federal recovery dollars to the Gulf Coast.”

THE KATRINA INDEX

JANUARY 17, 2007

TRACKING RECOVERY OF NEW ORLEANS & THE METRO AREA

“New Orleans continues to struggle with the pains of rebuilding, made that much more difficult by the increasing threat of violent crime. Still, trends indicate the pace has picked up in some areas of the recovery. Further progress will require clear improvements in the criminal justice system, along with investments in the city’s vital infrastructure.”

Local penetration



THE WALL STREET JOURNAL.



AP Associated Press





THE WALL STREET JOURNAL.



The Times-Picayune



AP Associated Press



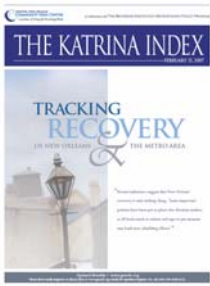
the Trumpet
Neighborhood Stories, Citywide Power



E-newsletter



1500



E-newsletter



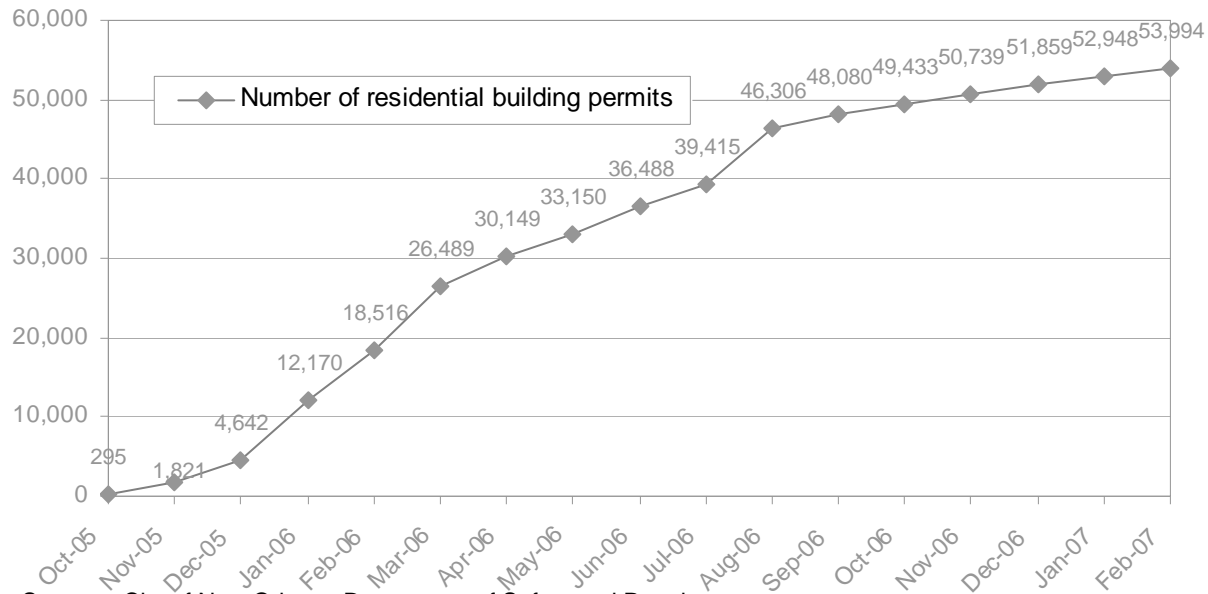
1500



2500



Figure 3: Cumulative Number of Residential Permits in Orleans Parish

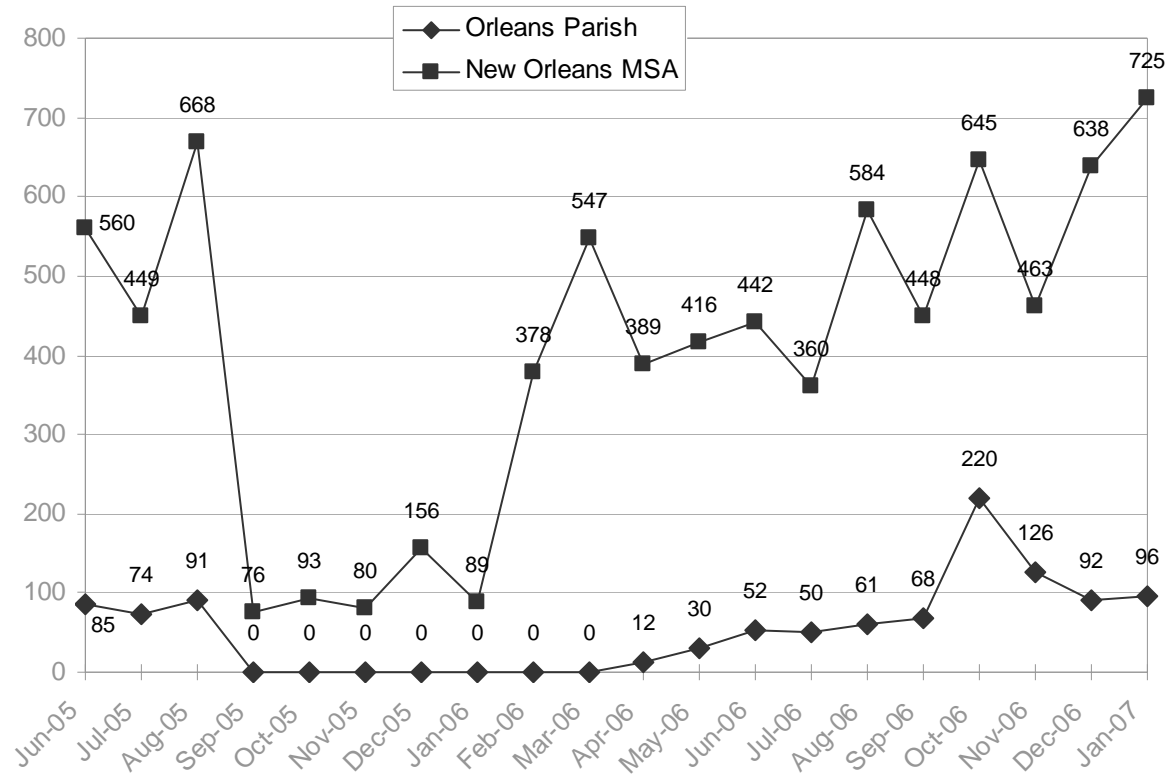


Sources: City of New Orleans Department of Safety and Permits.

Note: In December 2006, the City of New Orleans informed us that they would be providing this data in raw format rather than as frequencies. Running frequencies on the raw data supplied by the City resulted in different statistics than previously published. We have updated all of the numbers in this table to reflect this change. Residential permits include accessory structure, addition (over 50%), addition (under 50%), change of use, demolition, emergency permit, homeowner accessory structure, homeowner repair, new, renovation (non-structural), renovation (structural), repair, and swimming pool.



Figure 4: Number of New Residential Housing Permits, Total Units



Source: U.S. Census Bureau.

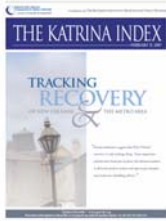
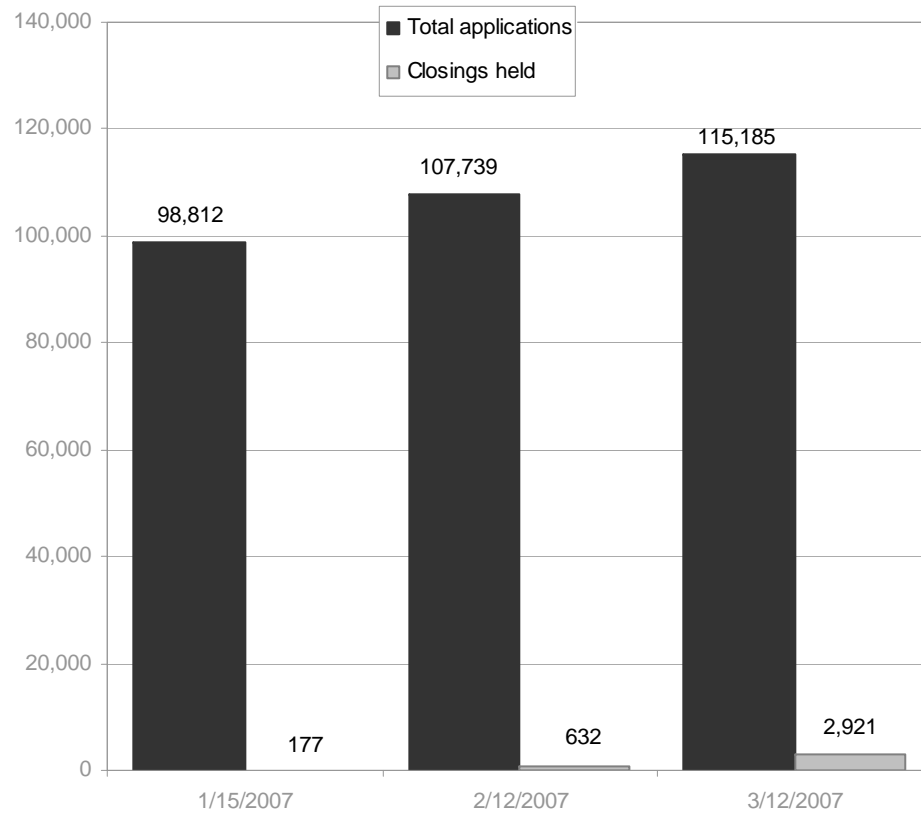


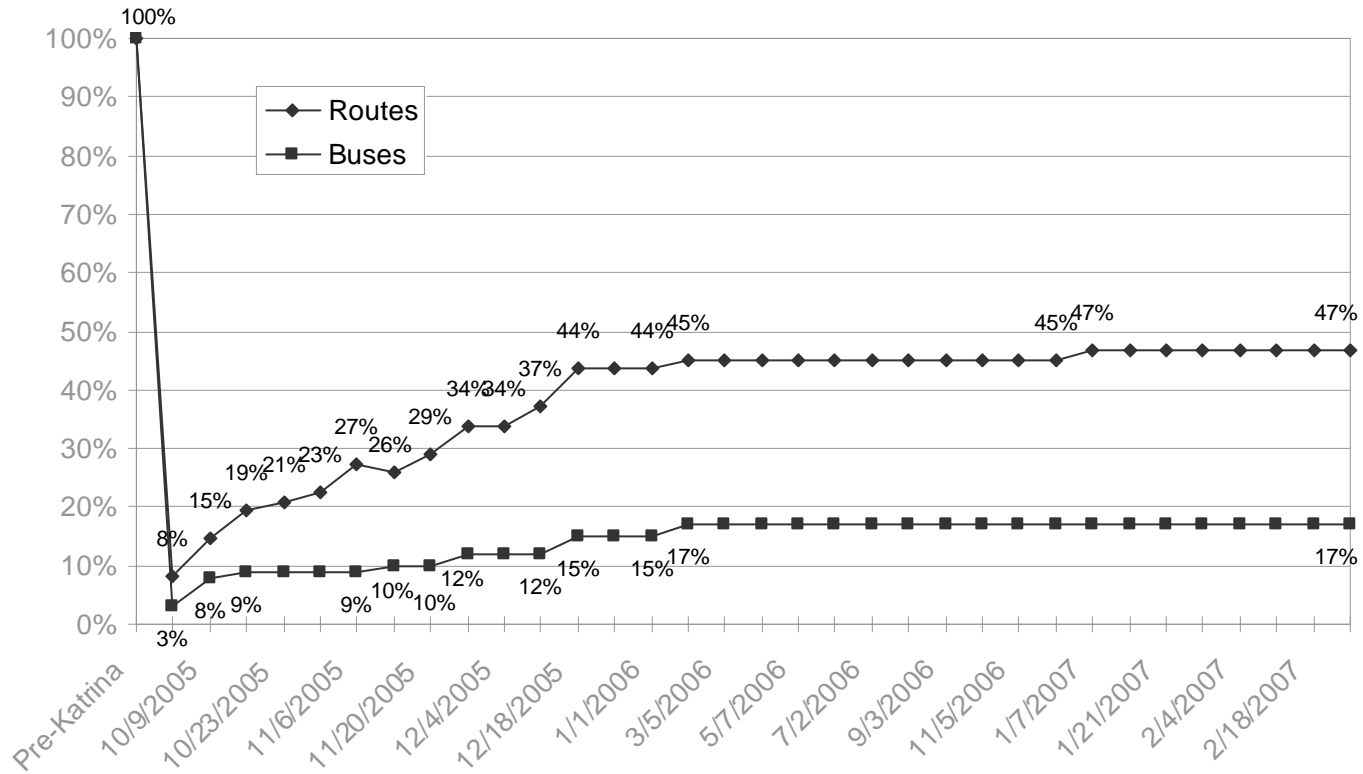
Figure 5: Status of Louisiana Road Home Applications



Source: The Road Home Program.



Figure 7: Operational Buses & Open Public Transportation Routes in New Orleans



Source: New Orleans Regional Transit Authority.

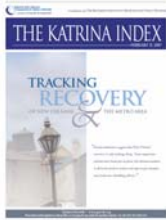
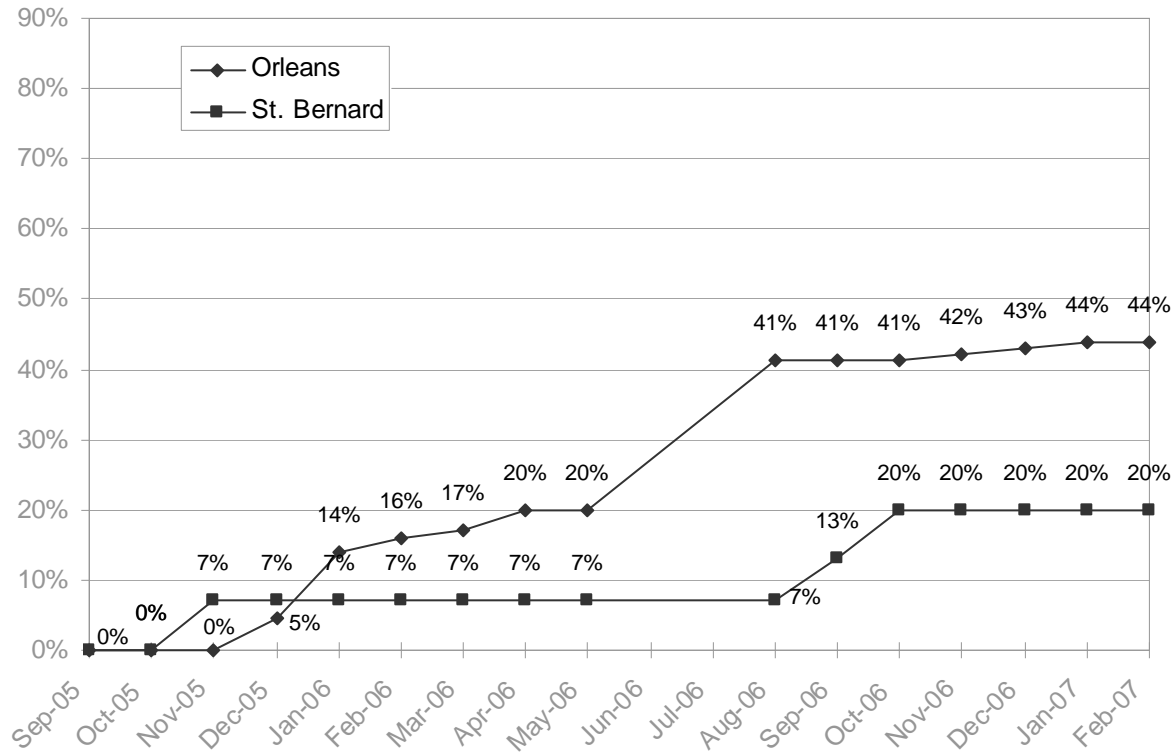


Figure 8: Proportion of Open Public Schools in Select Louisiana Parishes

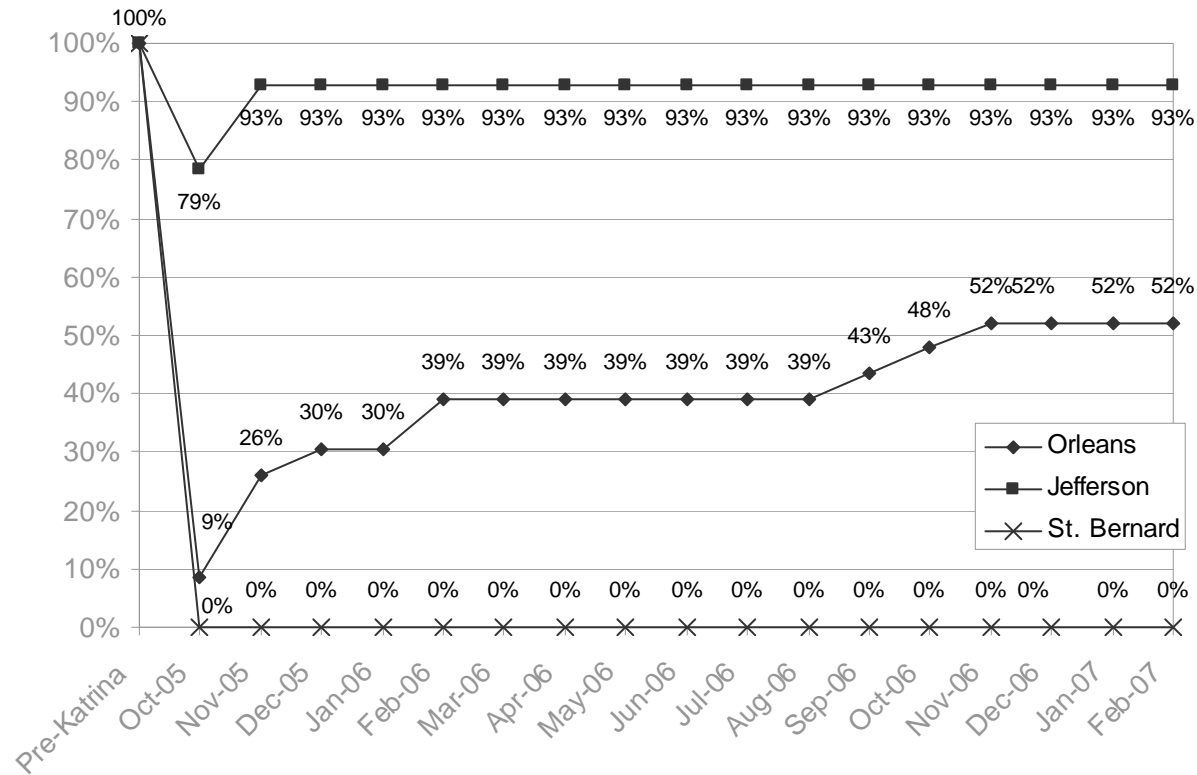


Sources: Louisiana Department of Education, Orleans Parish Schools, Plaquemines Parish Schools, New Orleans Times-Picayune.

Note: The Orleans Parish numbers were revised as of January 2007.



Figure 9: Proportion of State-licensed Hospitals in Operation, by Parish



Source: Louisiana Hospital Association, individual hospitals in Orleans, Jefferson, and St. Bernard parishes.

Notes: The state-licensed hospitals number includes not only hospitals providing acute care, but also psychiatric, long-term disability, and rehabilitation facilities. Numbers were revised to monthly counts in January 2007.

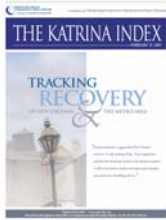
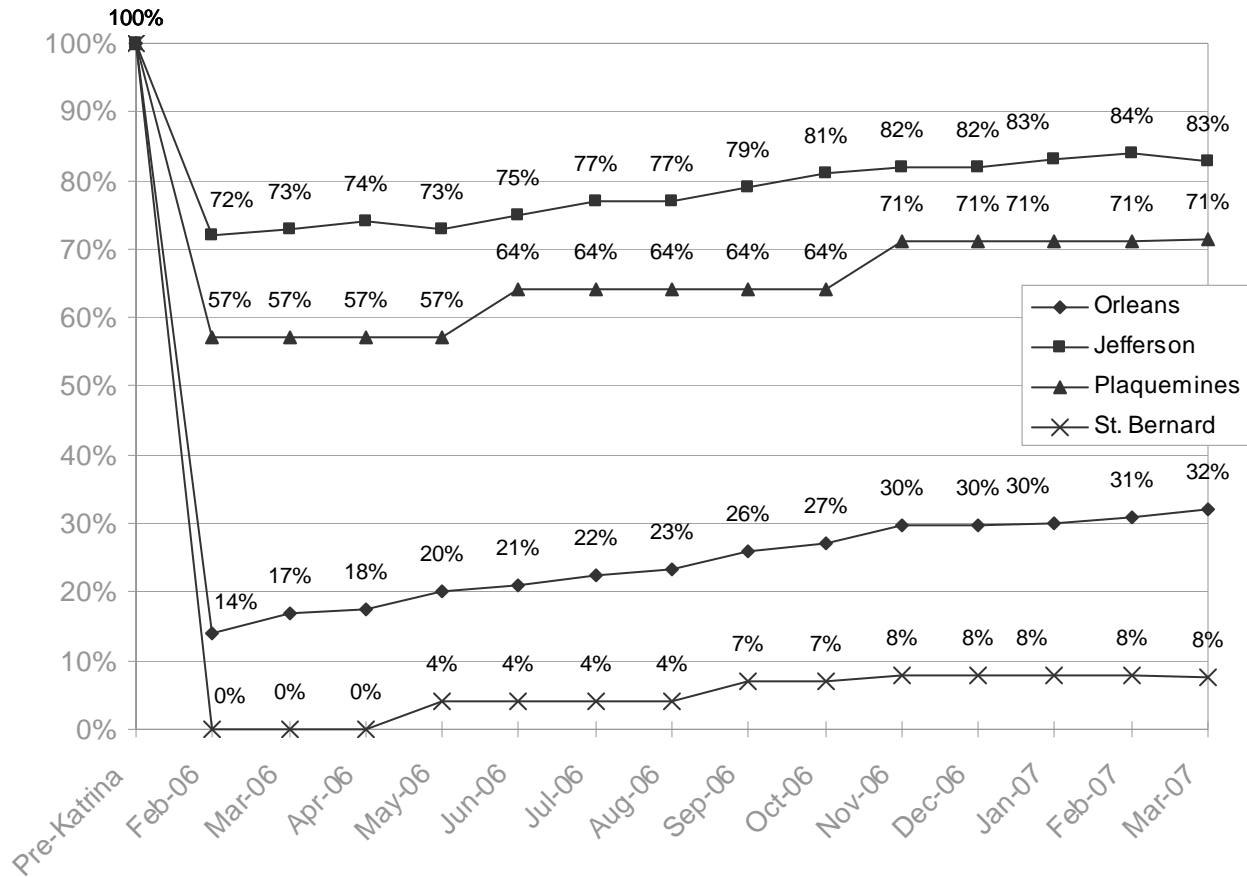


Figure 10: Proportion of Operational Child Care Centers in Select Louisiana Parishes



Source: Agenda for Children, Louisiana Department of Social Services Bureau of Licensing.

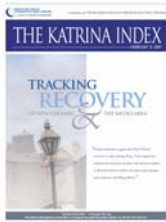
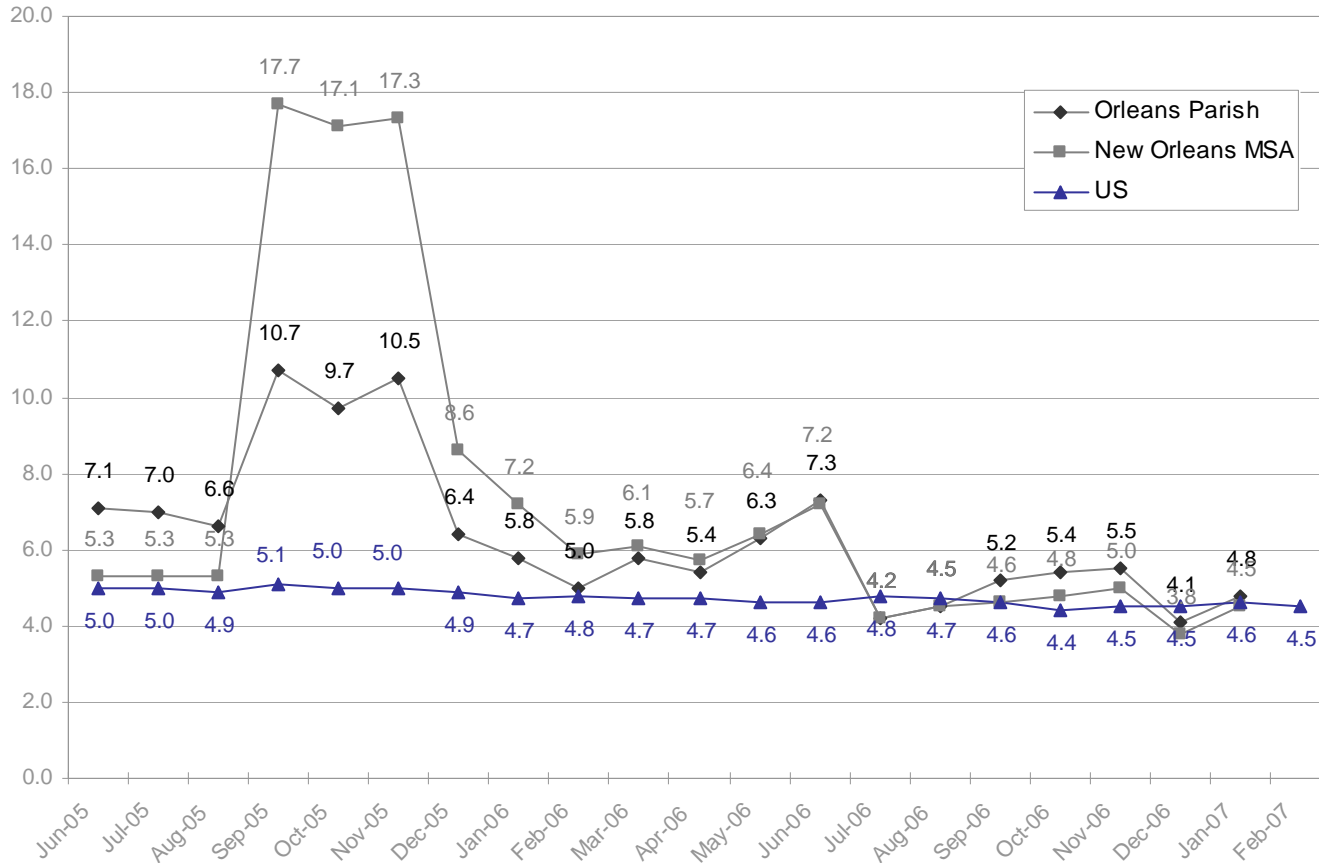


Figure 12: Unemployment Rates in Orleans Parish, New Orleans MSA, & U.S.

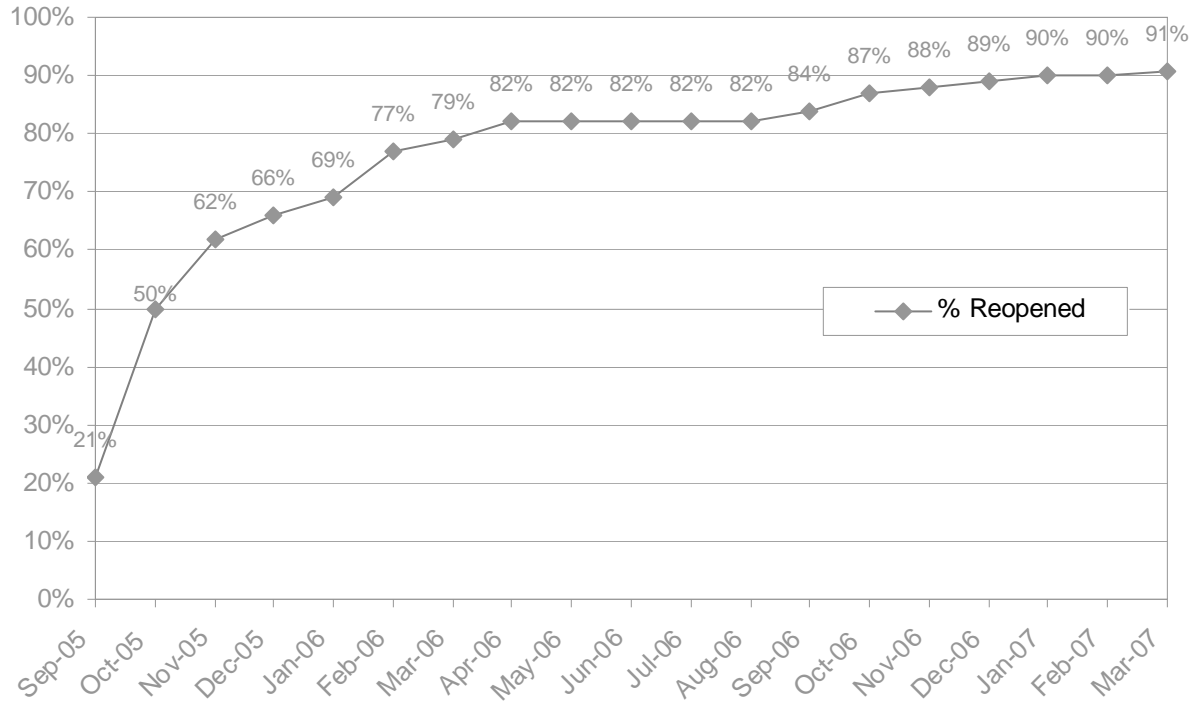


Source: Louisiana Department of Labor, Bureau of Labor Statistics.

Note: Between September 2005 and July 2006, numbers for Orleans Parish were unavailable because of problems with the sample size. In August 2006, the Louisiana Department of Labor (LDOL) again started releasing current and historical labor force data for New Orleans. However, these estimates are not approved by the Bureau of Labor Statistics and LDOL makes the following caveat in their release: "Caution should be used when making comparisons with 2005 data for areas affected by Hurricane Katrina since controlling data used in the estimation process cannot fully reflect the known shifts in the population" (for more information, please refer to page 13 of www.laworks.net/forms/lmi/Bulletin_August_2006.pdf).



Figure 13: Number of Open Hotels in New Orleans Area

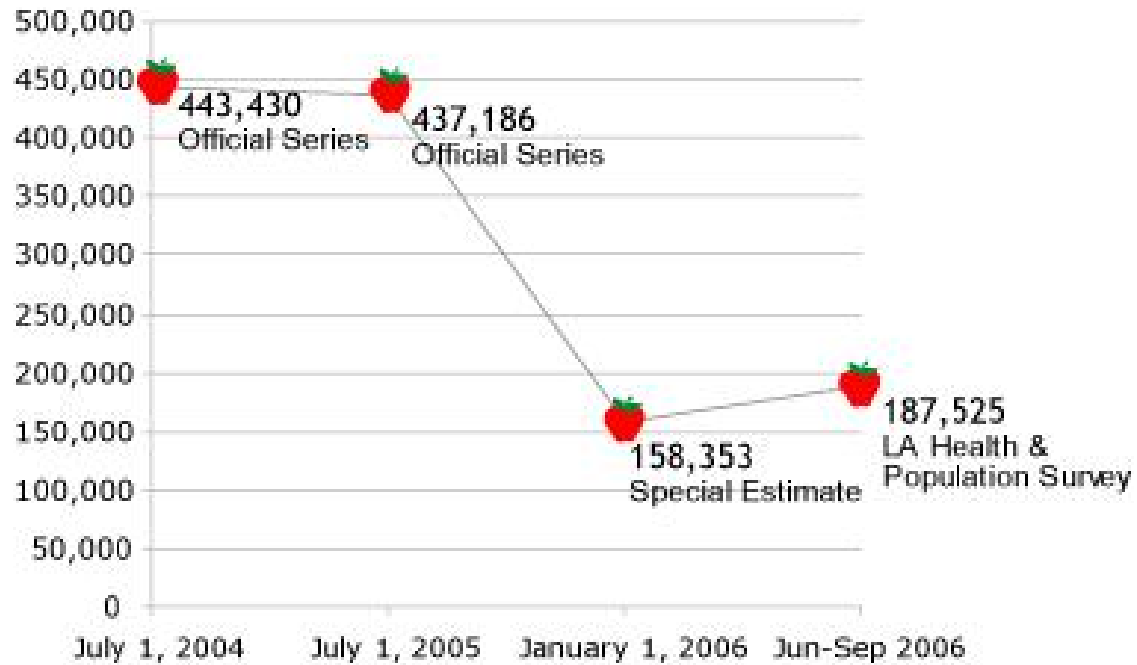


Source: Major area hotels.

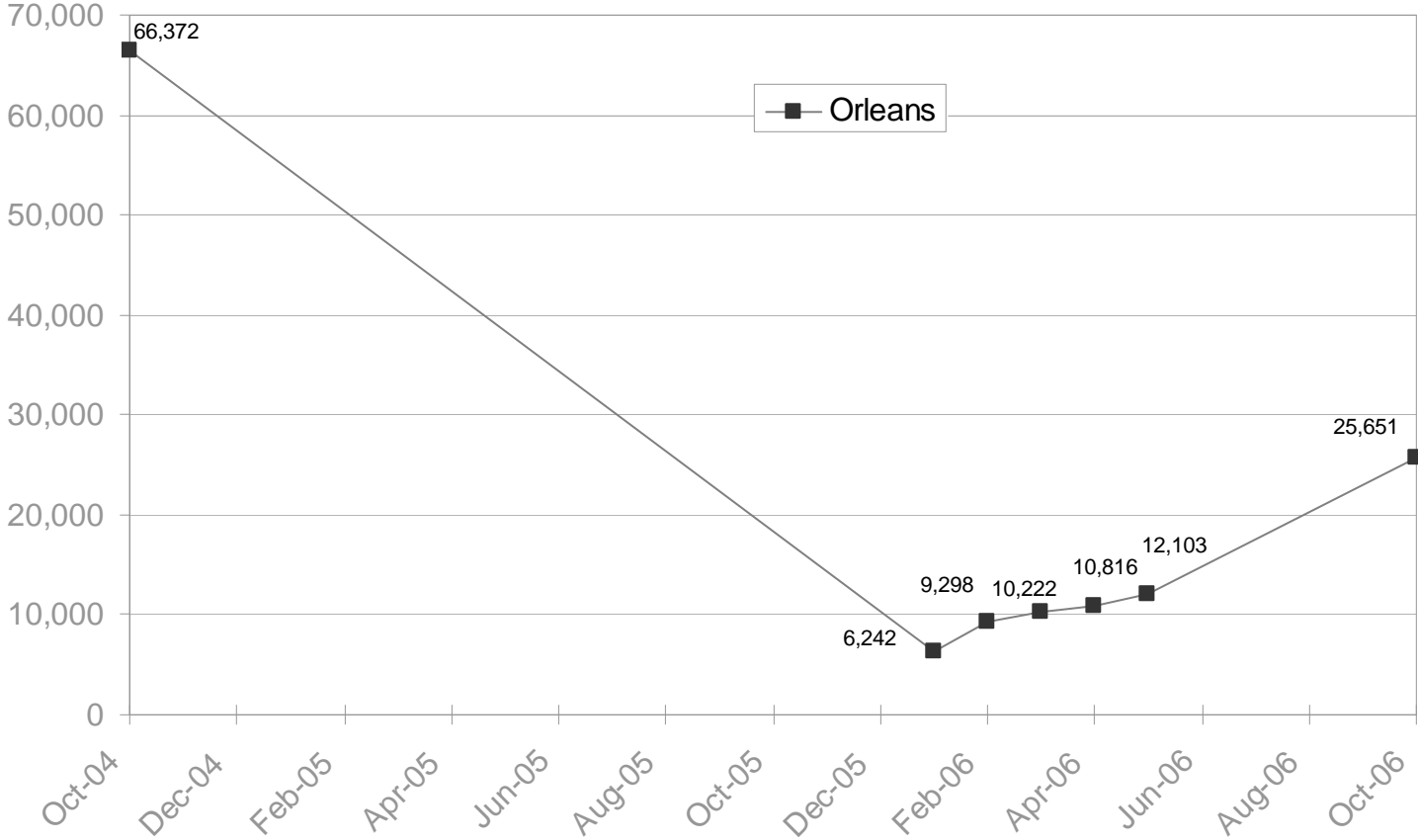


Does not include quality data that is in high demand

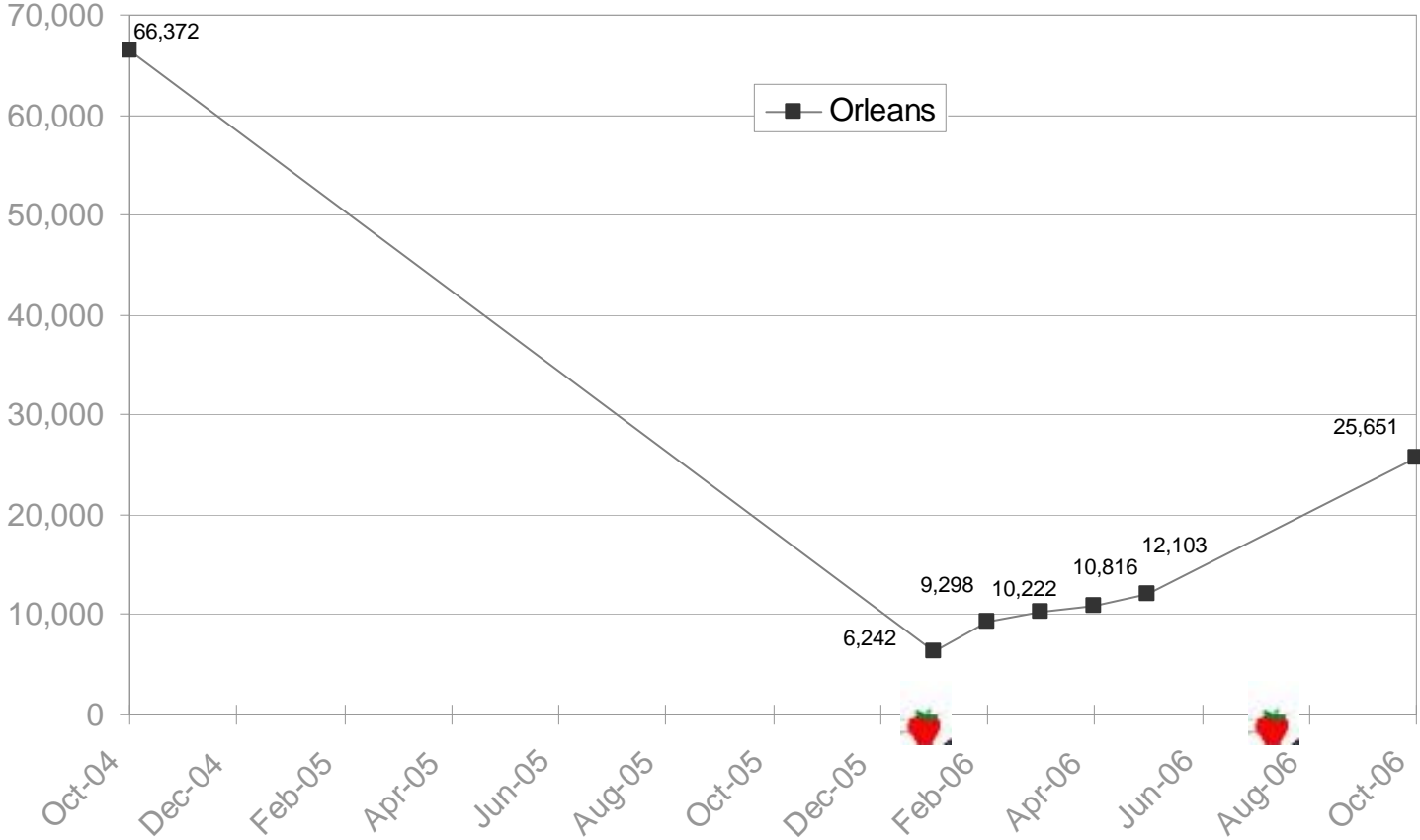
Household Population Orleans Parish



Public school enrollment in Orleans Parish



Public school enrollment in Orleans Parish



B27 =enrollmentIB27/ratiosIG27

| A | B | C | D | E | F | G | H | I | J | K | L |
|--|-------------|------------|------------|------------|------------|-------------|-------------|------------|------------------------------------|---------------------|---------------------|
| PARISH | May 06 Est | Apr 06 Est | Mar 06 Est | Feb 06 Est | Jan 06 Est | Dec 05 Est | Nov 05 Est | Oct 05 Est | Census Bureau Pop Estimate July 05 | # diff 0506 to 0705 | % diff 0506 to 0705 |
| Jefferson Parish | 371,445 | 372,246 | 368,435 | 367,573 | 363,309 | 354,337 | 328,223 | 258,128 | 452,824 | -81,379 | -18.0% |
| Jefferson Davis Parish | 30,932 | 31,017 | 31,281 | 31,276 | 31,488 | 31,753 | 32,012 | 32,865 | 31,272 | -340 | -1.1% |
| Lafayette Parish | 196,288 | 196,911 | 198,202 | 199,363 | 200,933 | 203,457 | 204,229 | 207,863 | 197,390 | -1,102 | -0.6% |
| Lafourche Parish | 90,697 | 90,741 | 91,002 | 91,382 | 92,061 | 92,622 | 93,251 | 95,214 | 92,179 | -1,482 | -1.6% |
| LaSalle Parish | 13,962 | 14,004 | 14,014 | 14,118 | 14,316 | 14,410 | 14,316 | 14,718 | 14,040 | -78 | -0.6% |
| Lincoln Parish | 42,876 | 42,756 | 42,857 | 43,079 | 43,600 | 43,993 | 44,253 | 44,844 | 42,108 | 768 | 1.8% |
| Livingston Parish | 111,718 | 111,763 | 112,481 | 112,615 | 112,520 | 112,924 | 113,188 | 115,691 | 109,206 | 2,512 | 2.3% |
| Madison Parish | 13,081 | 12,972 | 13,001 | 13,104 | 13,144 | 13,259 | 13,225 | 13,299 | 12,457 | 624 | 5.0% |
| Morehouse Parish | 29,940 | 29,945 | 30,117 | 30,194 | 30,466 | 30,496 | 30,484 | 30,443 | 29,989 | -49 | -0.2% |
| Natchitoches Parish | 38,426 | 37,844 | 38,775 | 38,952 | 39,346 | 39,251 | 39,307 | 39,922 | 38,541 | -115 | -0.3% |
| Orleans Parish | no new data | no new | no new | no new | 181,400 | 134,400 | no new data | 138,681 | 454,863 | na | na |
| <i>For Orleans Parish the City of New Orleans Rapid Population Estimate Survey is used (residential structure population). Available at www.gnocdc.org</i> | | | | | | | | | | | |
| Ouachita Parish (2) | 147,010 | 147,642 | 148,407 | 149,251 | 149,081 | 150,404 | 150,648 | 152,746 | 148,237 | -1,227 | -0.8% |
| Plaquemines Parish | 18,177 | 17,949 | 17,567 | 17,433 | 17,309 | 15,984 | 14,671 | 5,794 | 28,995 | -10,818 | -37.3% |
| Pointe Coupee Parish | 22,118 | 22,193 | 22,440 | 22,642 | 22,852 | 23,189 | 23,511 | 24,852 | 22,377 | -259 | -1.2% |
| Rapides Parish | 133,231 | 133,529 | 134,097 | 135,003 | 136,217 | 137,179 | 137,499 | 140,435 | 128,462 | 4,769 | 3.7% |
| Red River Parish | 9,994 | 9,845 | 9,930 | 10,078 | 9,981 | 10,085 | 10,065 | 10,382 | 9,465 | 529 | 5.6% |
| Richland Parish | 20,319 | 20,439 | 20,558 | 20,684 | 20,696 | 20,816 | 20,906 | 21,223 | 20,526 | -207 | -1.0% |
| Sabine Parish | 23,946 | 23,879 | 24,069 | 24,214 | 24,315 | 24,443 | 24,460 | 24,577 | 23,786 | 160 | 0.7% |
| St. Bernard Parish | 16,883 | 16,385 | 14,015 | 12,064 | 6,899 | no new data | no new data | 13,111 | 65,364 | -48,481 | -74.2% |
| St. Charles Parish | 50,871 | 50,944 | 51,314 | 51,517 | 51,830 | 52,137 | 52,205 | 52,492 | 50,633 | 238 | 0.5% |
| St. Helena Parish | 11,204 | 11,258 | 11,406 | 11,437 | 11,609 | 8,539 | 8,508 | 10,978 | 10,259 | 945 | 9.2% |
| St. James Parish | 21,551 | 21,519 | 21,540 | 21,659 | 21,747 | 21,981 | 21,975 | 22,317 | 21,150 | 401 | 1.9% |
| St. John the Baptist Parish | 48,517 | 48,588 | 48,944 | 49,022 | 49,286 | 49,983 | 51,065 | 54,668 | 46,393 | 2,124 | 4.6% |
| St. Landry Parish | 90,522 | 90,393 | 91,145 | 91,939 | 92,921 | 94,186 | 94,186 | 95,644 | 89,937 | 585 | 0.7% |
| St. Martin Parish | 50,327 | 50,591 | 50,896 | 51,219 | 51,647 | 51,706 | 51,747 | 53,055 | 50,434 | -107 | -0.2% |
| St. Mary Parish | 51,539 | 51,529 | 51,839 | 52,523 | 53,366 | 53,667 | 53,770 | 55,069 | 51,416 | 123 | 0.2% |

"Do you know if the monthly population estimates for the Louisiana parishes provided by the Dept. of Health & Hospitals are for a specific day of the month?

We would like to compare the monthly parish estimates with the Census Bureau's July 1, 2005 estimates. By knowing the time of the month the DHH estimates are for, we will be able to track better monthly growth rates.

We are in the midst of preparing new, accelerated estimates of personal income for metropolitan areas for 2005. Obviously, the effects of Katrina on New Orleans will have a major impact on our estimates. Therefore, we are trying to gather as much information as possible to assist us in the development of our estimates."

- Bureau of Economic Analysis, US Dept. of Commerce

"As the statistician for Louisiana OPH HIV/AIDS Program, I am interested in obtaining the latest population estimates available as well as any demographic information that might be available. In order to create program-wide plans for community outreach, surveillance and behavioral survey efforts geographic or neighborhood breakdowns at any level would be immensely useful.

In the face of our recovery, these data are of key importance."

- Louisiana Office of Public Health

"We want to know the number of people living in the southeast and southwest parts of the state that speak a language other than English. We are printing evacuation guides, and we are looking at doing versions in Spanish, Vietnamese or French. To do this we need to know how many people fall into that category so we can print enough maps and make a case for funding."

- LA Homeland Security and Emergency Preparedness

"What are the demographics nowadays in New Orleans? Without that information, we can't determine whether a jury is representative of the population."

-Orleans Parish Public Defender

"We need daytime population figures for New Orleans to make informed decisions about the future of television measurement in the market."

- Nielsen Media Research





“Do you know what source the USDA used to determine what food allocation we would get?”
- Second Harvest Food Bank of New Orleans





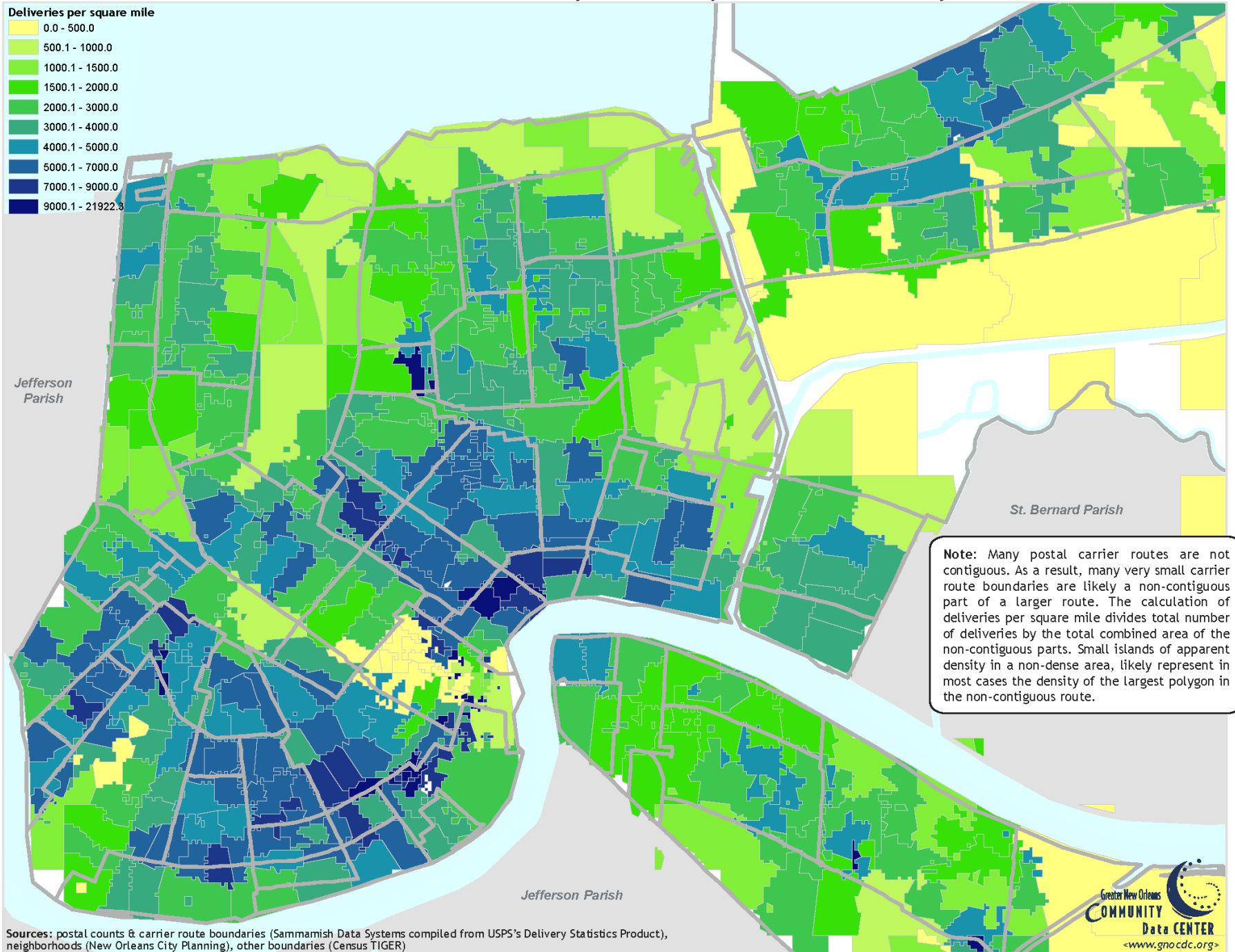
“Do you know what source the USDA used to determine what food allocation we would get?”
- Second Harvest Food Bank of New Orleans



“I am desperately trying to find that out as well. It comes from the Bureau of Labor Statistics. The basic formula includes both people living below poverty and unemployment numbers. The USDA is bound by law to use these measuring sticks but I am (and have been) questioning where they are getting their raw data to create the percentages.”
- LA Dept of Agriculture & Forestry



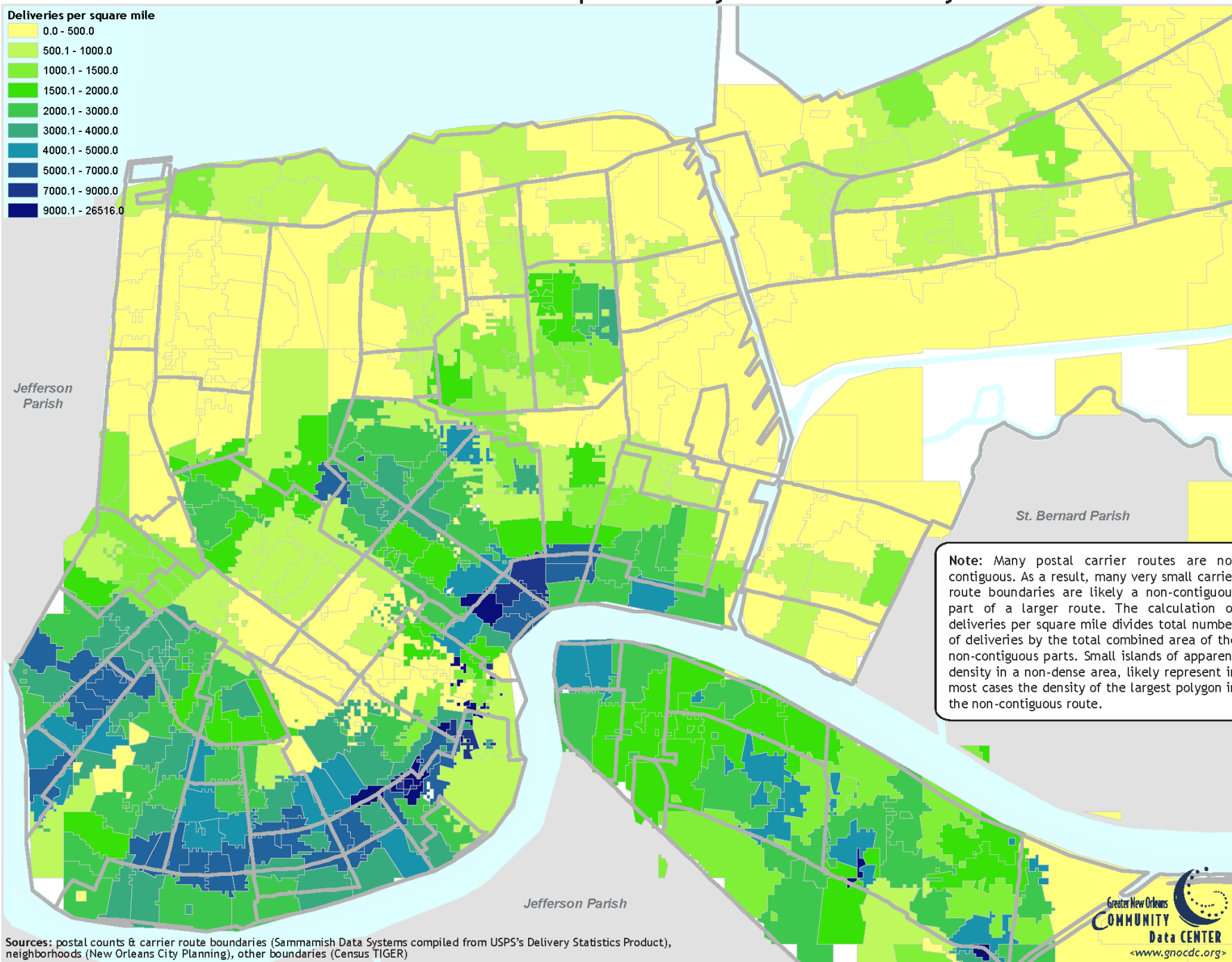
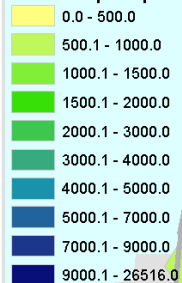
Orleans Parish Residential Postal Deliveries Per Square Mile by Carrier Route: July 2005



Sources: postal counts & carrier route boundaries (Sammamish Data Systems compiled from USPS's Delivery Statistics Product), neighborhoods (New Orleans City Planning), other boundaries (Census TIGER)

Orleans Parish Residential Postal Deliveries Per Square Mile by Carrier Route: July 2006

Deliveries per square mile



Jefferson Parish

St. Bernard Parish

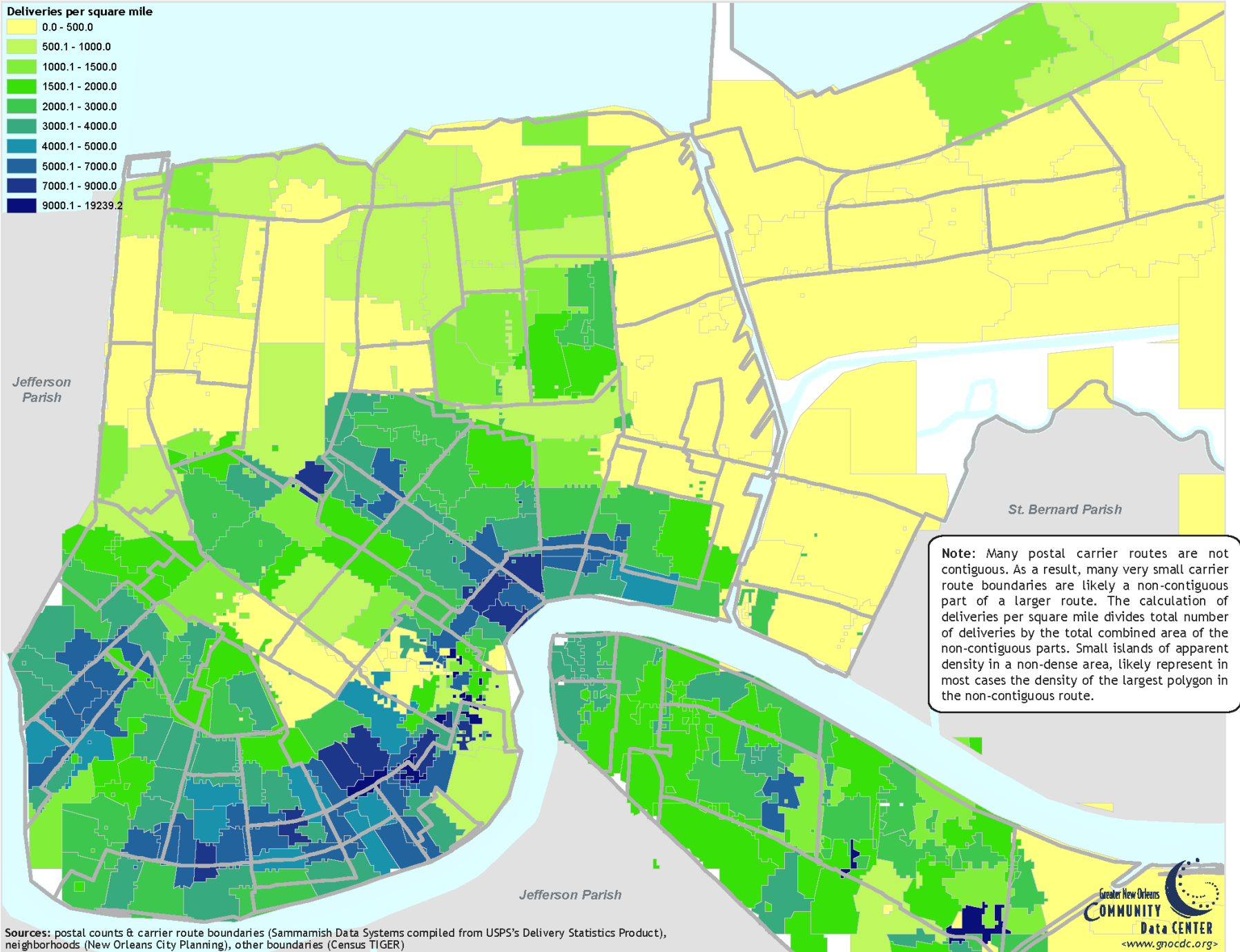
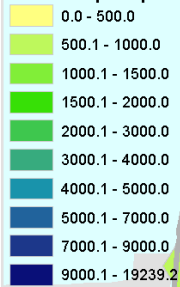
Jefferson Parish

Note: Many postal carrier routes are not contiguous. As a result, many very small carrier route boundaries are likely a non-contiguous part of a larger route. The calculation of deliveries per square mile divides total number of deliveries by the total combined area of the non-contiguous parts. Small islands of apparent density in a non-dense area, likely represent in most cases the density of the largest polygon in the non-contiguous route.

Sources: postal counts & carrier route boundaries (Sammamish Data Systems compiled from USPS's Delivery Statistics Product), neighborhoods (New Orleans City Planning), other boundaries (Census TIGER)

Orleans Parish Residential Postal Deliveries Per Square Mile by Carrier Route: January 2007

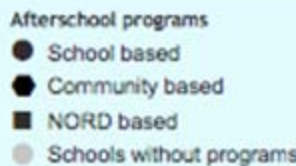
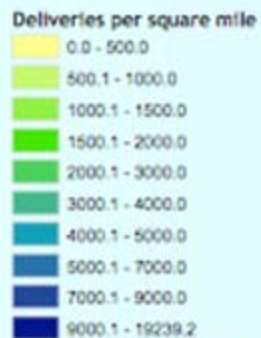
Deliveries per square mile



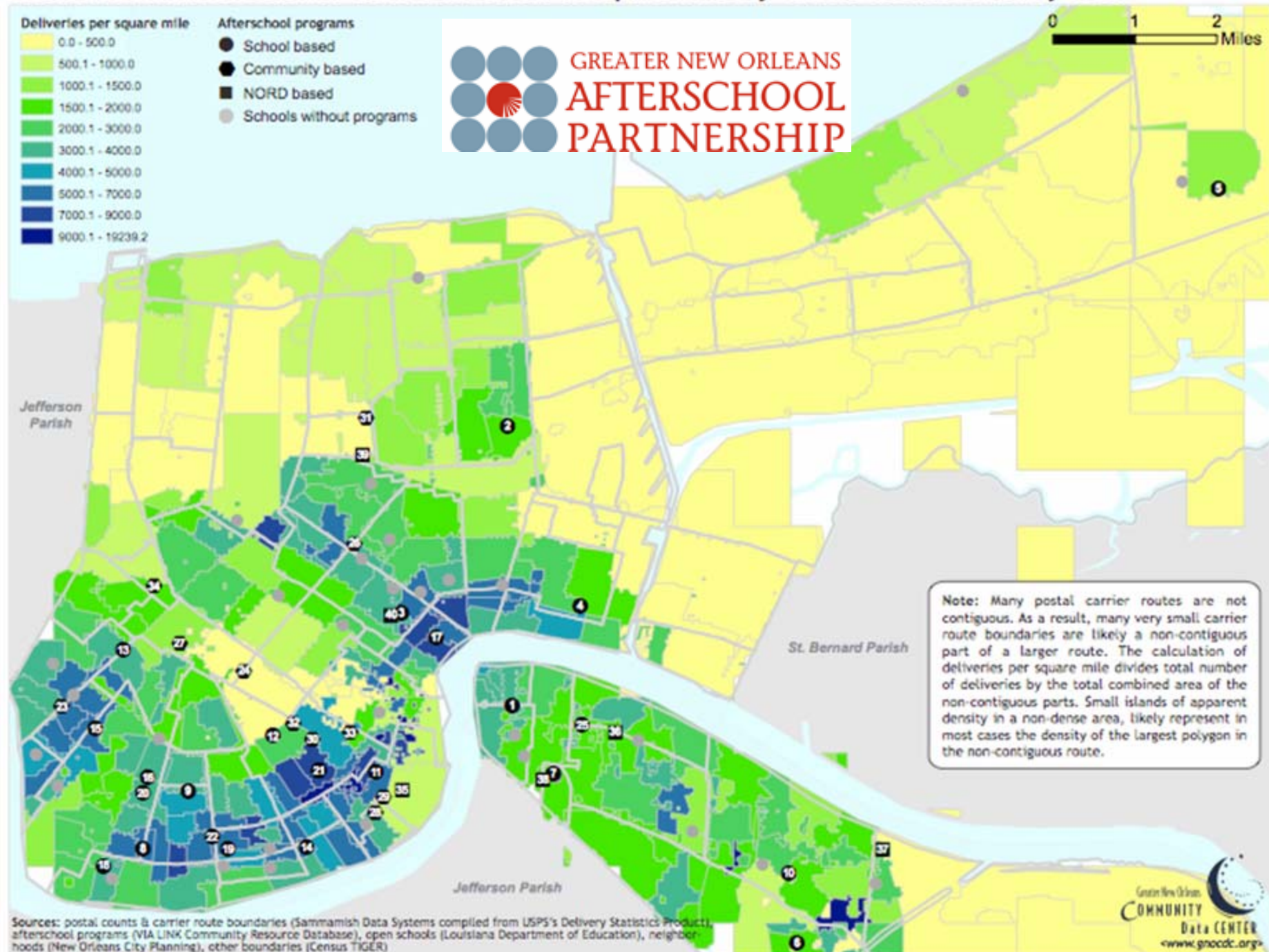
Note: Many postal carrier routes are not contiguous. As a result, many very small carrier route boundaries are likely a non-contiguous part of a larger route. The calculation of deliveries per square mile divides total number of deliveries by the total combined area of the non-contiguous parts. Small islands of apparent density in a non-dense area, likely represent in most cases the density of the largest polygon in the non-contiguous route.

Sources: postal counts & carrier route boundaries (Sammamish Data Systems compiled from USPS's Delivery Statistics Product), neighborhoods (New Orleans City Planning), other boundaries (Census TIGER)

Orleans Parish Residential Postal Deliveries Per Square Mile by Carrier Route: January 2007



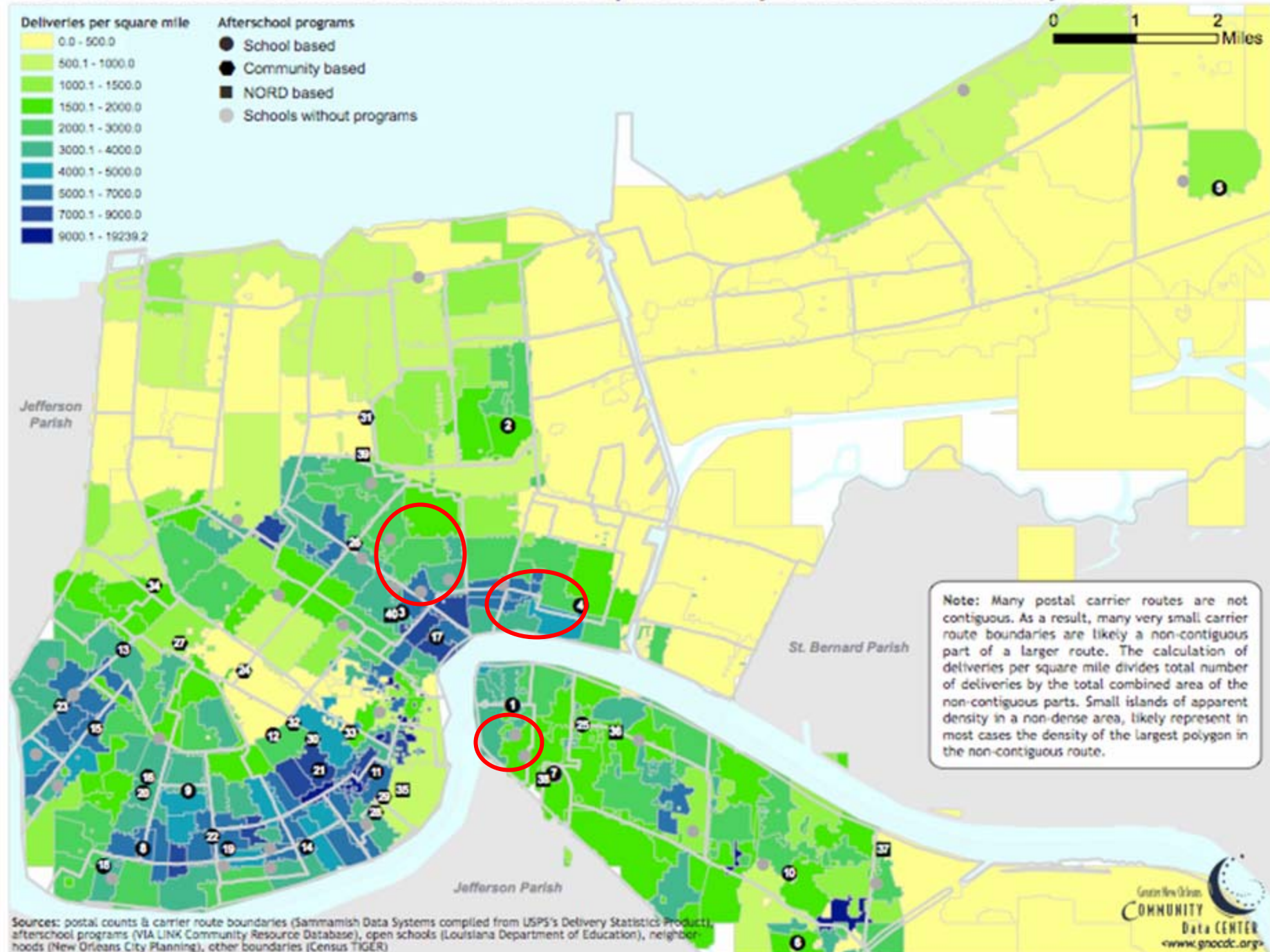
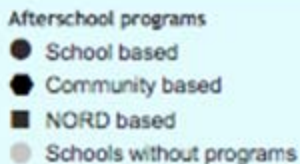
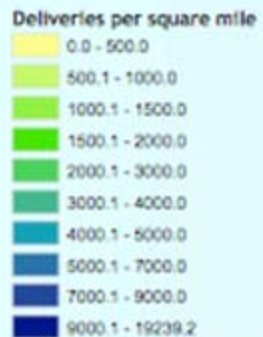
**GREATER NEW ORLEANS
AFTERSCHOOL
PARTNERSHIP**



Note: Many postal carrier routes are not contiguous. As a result, many very small carrier route boundaries are likely a non-contiguous part of a larger route. The calculation of deliveries per square mile divides total number of deliveries by the total combined area of the non-contiguous parts. Small islands of apparent density in a non-dense area, likely represent in most cases the density of the largest polygon in the non-contiguous route.

Sources: postal counts & carrier route boundaries (Sammamish Data Systems compiled from USPS's Delivery Statistics Product), afterschool programs (VIA LINK Community Resource Database), open schools (Louisiana Department of Education), neighborhoods (New Orleans City Planning), other boundaries (Census TIGER)

Orleans Parish Residential Postal Deliveries Per Square Mile by Carrier Route: January 2007



Note: Many postal carrier routes are not contiguous. As a result, many very small carrier route boundaries are likely a non-contiguous part of a larger route. The calculation of deliveries per square mile divides total number of deliveries by the total combined area of the non-contiguous parts. Small islands of apparent density in a non-dense area, likely represent in most cases the density of the largest polygon in the non-contiguous route.

Sources: postal counts & carrier route boundaries (Sammamish Data Systems compiled from USPS's Delivery Statistics Product), afterschool programs (VIA LINK Community Resource Database), open schools (Louisiana Department of Education), neighborhoods (New Orleans City Planning), other boundaries (Census TIGER)

THE KATRINA INDEX

JANUARY 17, 2007

TRACKING RECOVERY OF NEW ORLEANS & THE METRO AREA

"New Orleans continues to struggle with the pains of rebuilding, made that much more difficult by the increasing threat of violent crime. Still, trends indicate the pace has picked up in some areas of the recovery. Further progress will require clear improvements in the criminal justice system, along with investments in the city's vital infrastructure."

Updated Monthly • www.gnocdc.org

For speediest response, please direct media inquiries to www.gnocdc.org/media/

- Enormous value and demand for data and analysis
- Enormous demand for a “one-stop shop” of data
- Local data is the most difficult to get, but sometimes the most relevant or up-to-date
- Federal data: lag in reporting, point of contacts changed which created occasional errors
- Wish list: better partnership with local reporting agencies, better federal data, esp. of federal beneficiaries, better current population and demographic estimates